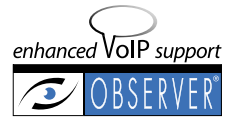




Observer® New Features Guide



Observer provides in-depth network intelligence and monitoring capabilities for distributed network analysis across the entire enterprise. New features allow you to track NetFlow and sFlow® traffic, monitor Fibre Channel links, analyze Citrix applications in-depth, and extend your VoIP support.

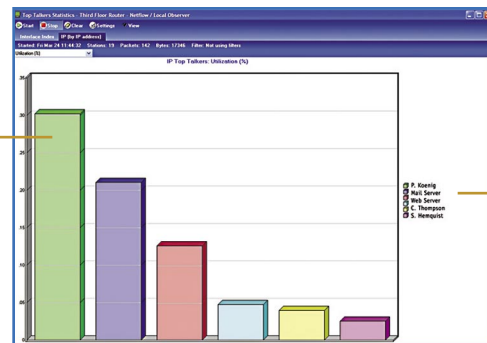
NetFlow Integration

NetFlow monitors routed traffic on the backplane of Cisco switches and routers. Any Advanced Expert Probe can be configured to aggregate flows from various NetFlow devices on the network and send updated information to an Observer console. The console then displays the NetFlow data, providing top talkers, pairs matrix, bandwidth usage, long-term trending, VLAN analysis, and application awareness.

IT can gain a number of benefits by integrating NetFlow technology in an Observer environment.

- Collect statistics on user activity
- Extend Observer probe visibility
- Obtain long-term trending reports
- Consolidate and encrypt user data collected by NetFlow technology

Quickly identify who or what is using the most bandwidth



View active devices by interface or IP address

NetFlow Top Talkers

sFlow Integration

sFlow is a standard traffic reporting mechanism that device manufacturers have embedded into switches. sFlow monitors sampled traffic on the backplane of these switches and then pushes the data to any Network Instruments Advanced Expert Probe. Similar to how Observer integrates NetFlow, Observer then provides real-time statistics and long-term trending reports on this data.

Any Advanced Expert Probe (or hardware appliance running Expert probe software) collects sFlow data. Utilize any Expert Observer or Observer Suite console to display this information.

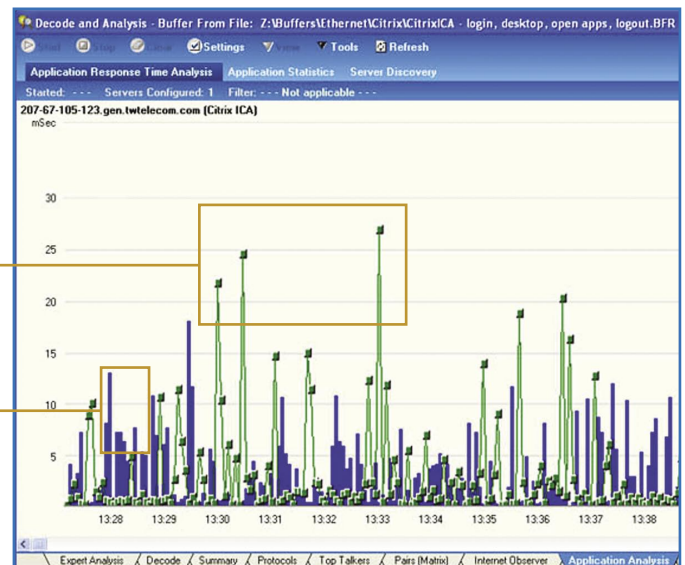
Application Analysis for Citrix

Observer's Application Analysis now supports Citrix, providing up-to-the-nanosecond reports on application performance and session-by-session breakdown of communication flows. Tracking Citrix applications empowers network professionals to track response times and failed transactions, and troubleshoot beyond the TCP layer for true application analysis.

Application Analysis is available in Expert Observer and Observer Suite.

Response Times

Application Requests



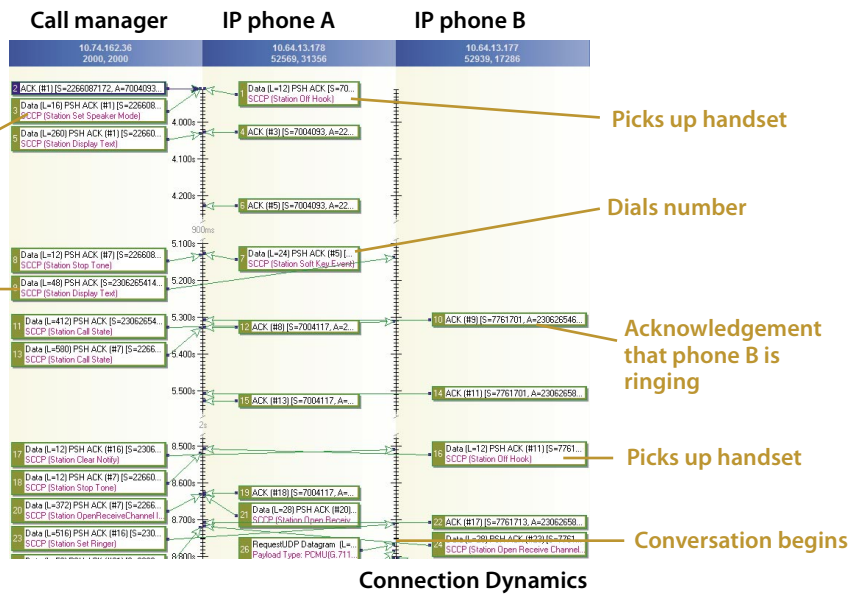
Application Response Time



VoIP Support for Avaya and Mitel Systems

For managing VoIP communication, Observer now includes extended VoIP analysis support for Avaya® and Mitel® systems. This includes over 70 VoIP-specific metrics, voice quality scoring, call summaries, and the ability to customize the impairment factors of the industry-accepted E-model.

VoIP Analysis is available in Expert Observer and Observer Suite.



Fibre Channel Support

Network administrators can now obtain comprehensive visibility into their storage area networks (SAN) that run over Fibre Channel links with Network Instruments' new line of internally designed hardware appliances.

Network Instruments has leveraged its Gen2™ capture technology to deliver a complete Fibre Channel analysis solution, seamlessly integrating SAN analysis with all the other types of analysis that Observer delivers—all with a consistent user experience.

Network Instruments' Fibre Channel systems allow you to:

- Decode Fibre Channel protocols
- Monitor over 30 Fibre Channel statistics
- Track application performance
- Set alarms to proactively identify potential problems
- Receive Expert problem identification on 20 SAN-specific issues
- Review aggregate summaries of overall SAN health
- Perform long-term trending and reporting
- Drill down and isolate specific conversations or transactions

Choose from a variety of Fibre Channel monitoring options

Fibre Channel Probe Appliance

A rack-mountable system specifically designed for real-time, full-duplex Fibre Channel analysis.

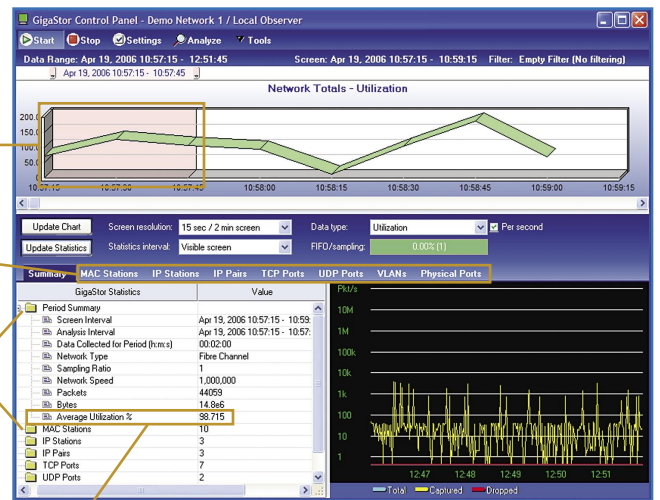
GigaStor-FC

A high-capacity system specifically designed for historical data analysis. The GigaStor-FC can store up to 8 terabytes of data depending on the configuration.

Fibre Channel Observer Suite System

A portable system that is equipped with all the hardware and software that is required to monitor Fibre Channel links.

Fibre Channel systems can be configured with one or two full-duplex connections. Links can be monitored individually or in aggregate. Probes report to Expert Observer and Observer Suite consoles located anywhere on the network.



About Network Instruments

Network Instruments provides in-depth network intelligence and continuous network availability through innovative analysis solutions. Enterprise network professionals depend on Network Instruments' Observer product line for unparalleled network visibility to efficiently solve network problems and manage deployments. By combining a powerful management console with high-performance analysis appliances, Observer simplifies problem resolution and optimizes network and application performance. The company continues to lead the industry in ROI with its advanced Distributed Network Analysis (NI-DNA™) architecture, which successfully integrates comprehensive analysis functionality across heterogeneous networks through a single monitoring interface. Network Instruments is headquartered in Minneapolis with sales offices worldwide and distributors in over 50 countries. For more information about the company, products, technology, NI-DNA, becoming a partner, and NI University please visit www.networkinstruments.com.

Solution Bundles

Contact a Network Instruments representative or dealer to ask about product bundles that cover all of your network management needs.



Corporate Headquarters

Network Instruments, LLC • 10701 Red Circle Drive • Minnetonka, MN 55343 • USA
(800) 526-7919 toll free • (952) 358-3800 telephone • (952) 358-3801 fax

www.networkinstruments.com

European Headquarters

Network Instruments • 7 Old Yard • Rectory Lane • Brasted, Westerham • Kent TN16 1JP • United Kingdom
+ 44 (0) 1959 569880 telephone • + 44 (0) 1959 569881 fax

www.networkinstruments.co.uk